



WOLF MIDI R 75

Specifications

Nominal Power (W)	75 W
Luminous Flux (lm)	8625 - 10125 lumen
Efficacy (lm/W)	115 - 135 lm/W
Nominal Voltage (V)	220 - 240 V / 50 - 60 Hz
Power Factor	> 0.95
IEC Protection Class	Class I
Ingress Protection	IP 66
Impact Protection	IK 09
Colour Rendering Index (CRI)	> 70
Colour Temperature (K)	2700 - 6500 K
Operating Temperature (Ta)	Outdoor -20 °C / +50 °C
Diffuser	4 mm Tempered Glass
Optic	PMMA
Surge Protection (kV)	6 - 10 kV
Control Protocols	1-10V DALI ZigBee DMX
Housing	Aluminum
Tilt Angle	-15° / +15°
Mounting Diameters	Ø42 mm - Ø76 mm
Dimensions and Weight	502 x 192 x 138 mm / 4.8 kg
Colour Options	All RAL colours

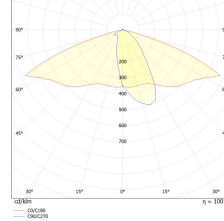
IP66 IK09 CE CB Scheme TSS RoHS



Description

LED Street Lighting Luminaire

Photometric Distribution:



Complied Standards:

LM 79-08, LM 80
EN 60598-1:2015+A1:2018
EN 60598-2-13:2006+A1:2012+A2:2016
EN 62262:2002
IEC TR 62778:2014

LED Lifetime:

120,000 hours L80

Applications

- Streets and Roads
- Parks and Car Lots
- Residential Areas
- Industrial Zones
- Railway Stations

