



ELOP 50

Specifications

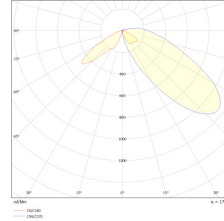
Nominal Power (W)	50 W
Luminous Flux (lm)	5750 - 6750 lumen
Efficacy (lm/W)	115 - 135 lm/W
Nominal Voltage (V)	220 - 240 V / 50 - 60 Hz
Power Factor	> 0.95
IEC Protection Class	Class I
Ingress Protection	IP 65
Impact Protection	IK 08
Colour Rendering Index (CRI)	> 70
Colour Temperature (K)	2700 - 6500 K
Operating Temperature (Ta)	Outdoor -20 °C / +50 °C
Diffuser	PMMA
Optic	PMMA
Surge Protection (kV)	6 - 10 kV
Control Protocols	1-10V DALI ZigBee DMX
Housing	Aluminum - Steel
Dimensions and Weight	250 mm - 2000 mm
Colour Options	All RAL colours



Description

LED Decorative Lighting Pole

Photometric Distribution:



Complied Standards:

LM 79-08, LM 80

EN 60598-1:2015+A1:2018

EN 60598-2-13:2006+A1:2012+A2:2016

LED Lifetime:

120,000 hours L80

Applications

- Landscape and Gardens
- Urban Areas
- Streets and Roads
- Parks and Car Lots
- Residential Areas



CORPORATE

Company
Quality and R&D
Certificates
News
Career

PRODUCTS

Road and Street Luminaires
Floodlights and Area Luminaires
Industrial and Tunnel Luminaires
Indoor and Office Luminaires
Poles and Bollards
İMAJ® Ballasts and Ignitors
GRITCON® Smart Control
GRITSOL® Solar Systems

CONTACT US

E-Mail : sales@grupimaj.com
Phone : +90 212 689 93 08-09-10 (pbx)
Fax : +90 212 689 93 11
GSM : +90 507 699 53 32
Address : Kavaklı district, Deniz Aktaş street, No: 6 |
345520 Beylikdüzü / İstanbul / Turkey

